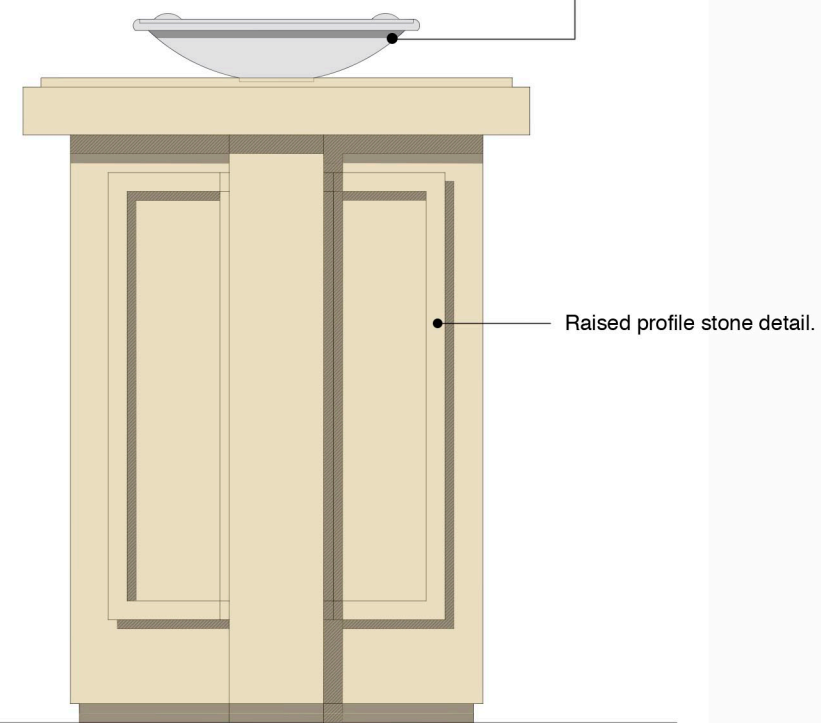
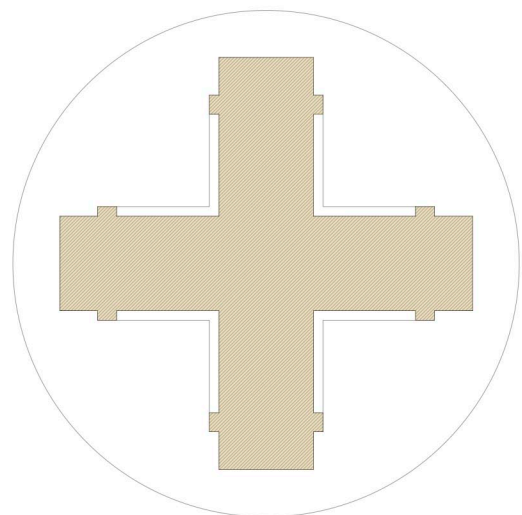


Font Plan, view from above.

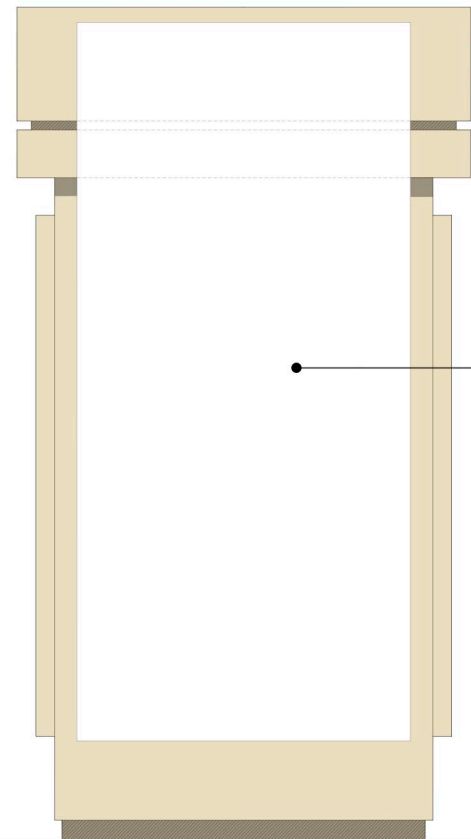


Font Elevation

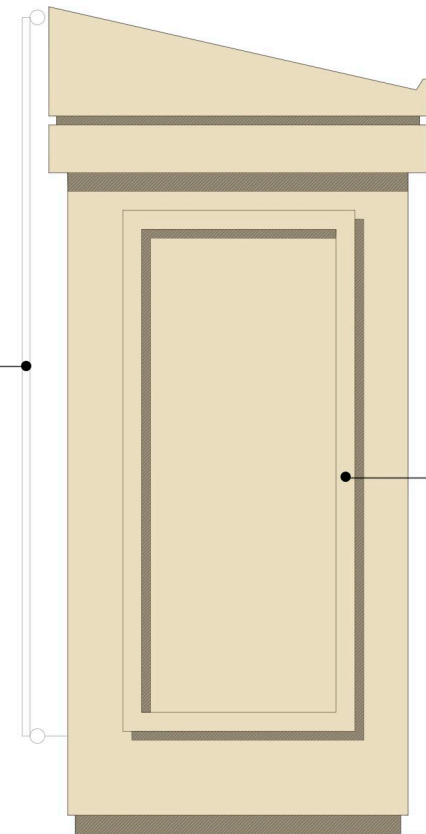


Font Plan, view through cruciform base.

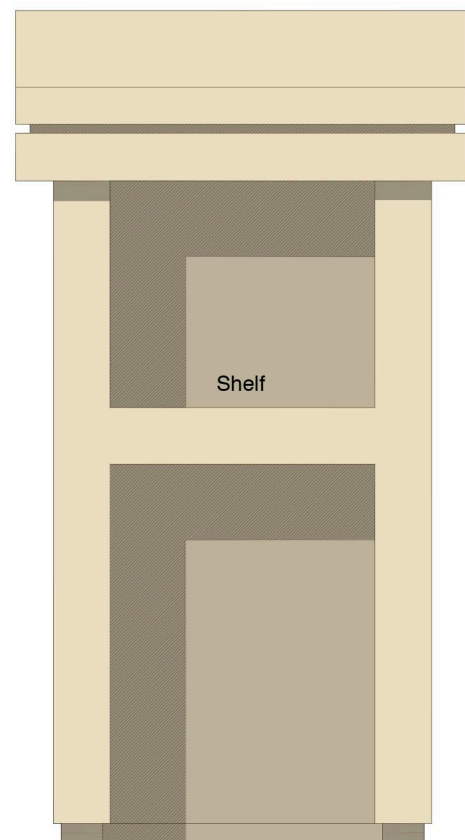
Font



Lectern elevation facing the Nave.

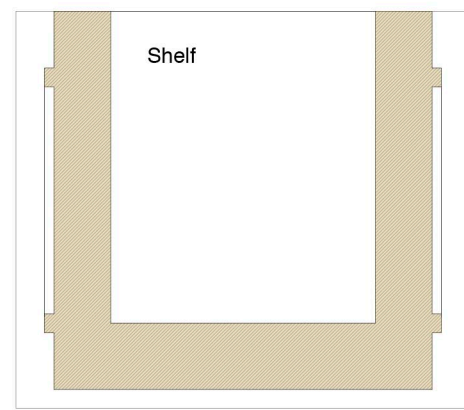


Lectern side elevation.



Lectern rear elevation.

Note:
Font and Lectern to be manufactured from
Scottish Buff sandstone.



Changeable banner on the face of lectern - facing into Church.

Lectern plan.

Lectern

St Hugh and St John, Timperley.

New Font and Lectern

Drawing 1811-21 Not to Scale
May 2019

R. S. Harrington Architect Ltd.